

Status of Assessed Contributions and Financial Situation of WMO

EC-79/INF. 8.3(2)

45th session of the Financial Advisory Committee
(FINAC-45)

12-13 June 2025



WORLD
METEOROLOGICAL
ORGANIZATION



The UN system is facing an evolving financial landscape

The evolving landscape poses both short- and long-term financial sustainability risks for all UN organizations, including WMO.

However, this evolution also provides an opportunity for innovation, ensuring WMO is highly focused to support its Members and that it is fit-for-purpose for the future. This analysis is being conducted both within WMO and as part of the broader UN80 initiative by the UN. At WMO, we aim to:



Sharpen our focus and prioritize activities for delivery



Review the organizational structure to make it fit-for-purpose

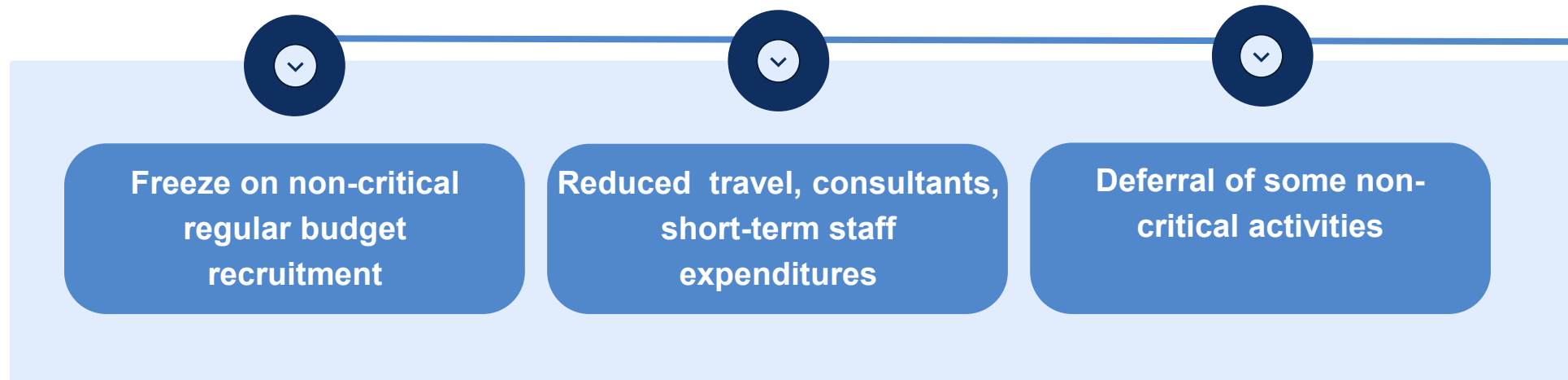


Harness digital tools and technologies for the future



Immediate cost-containment measures

The current financial environment has had a negative impact on WMO, primarily in the areas of payments of assessed contributions and resulting short-term liquidity of the Regular Budget.



These measures are expected to contain expenditures by approximately CHF 6M and may continue into 2026, if uncertainties persist.

Strategic Review

Alongside the cost-containment measures, a strategic organizational review has been initiated.



To support this process, an **Organizational Resilience Management Group (ORMG)** was convened in April 2025.

Subsequently, a **Task Team** was created to provide recommendations to the ORMG on responding to potential funding challenges.



Be fit-for-purpose

Analyze Secretariat activities, functions and structure



Review WMO mandates

To focus on priorities and high-impact areas



Active contribution to UN system

Including by contributing to and benefiting from the UN80 initiative

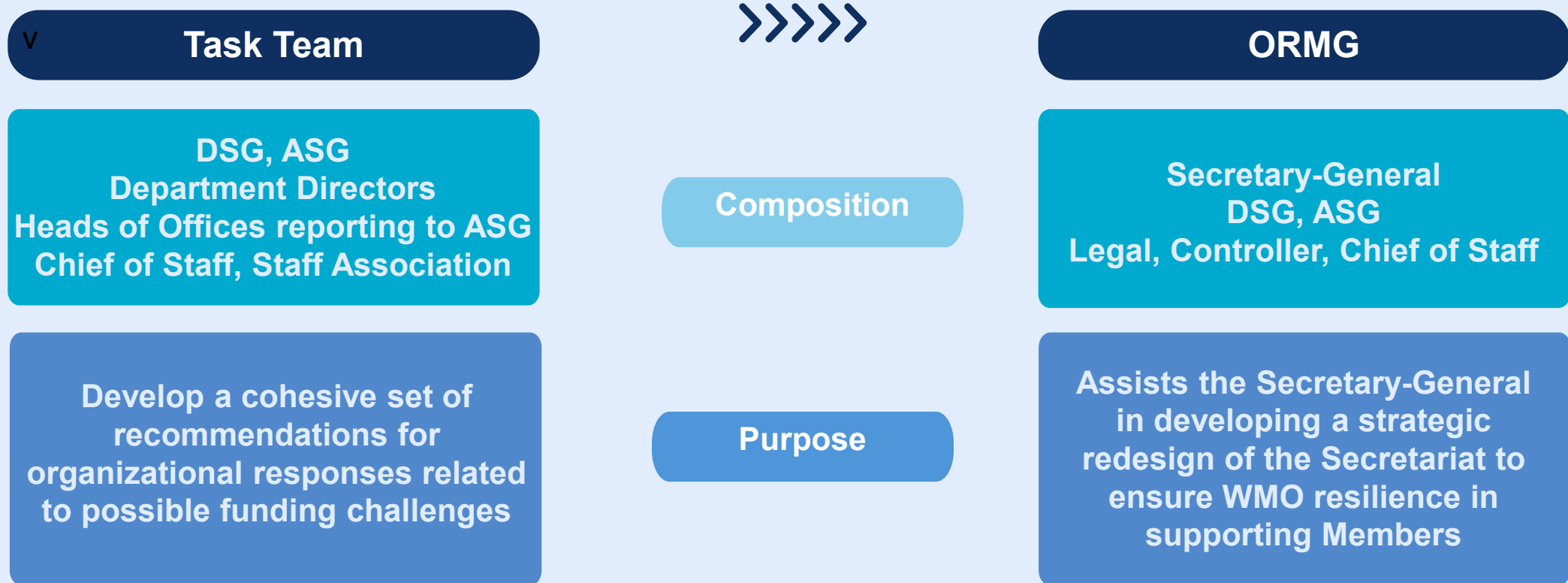


Identify efficiencies

Determine how to effectively address potential funding shortfall



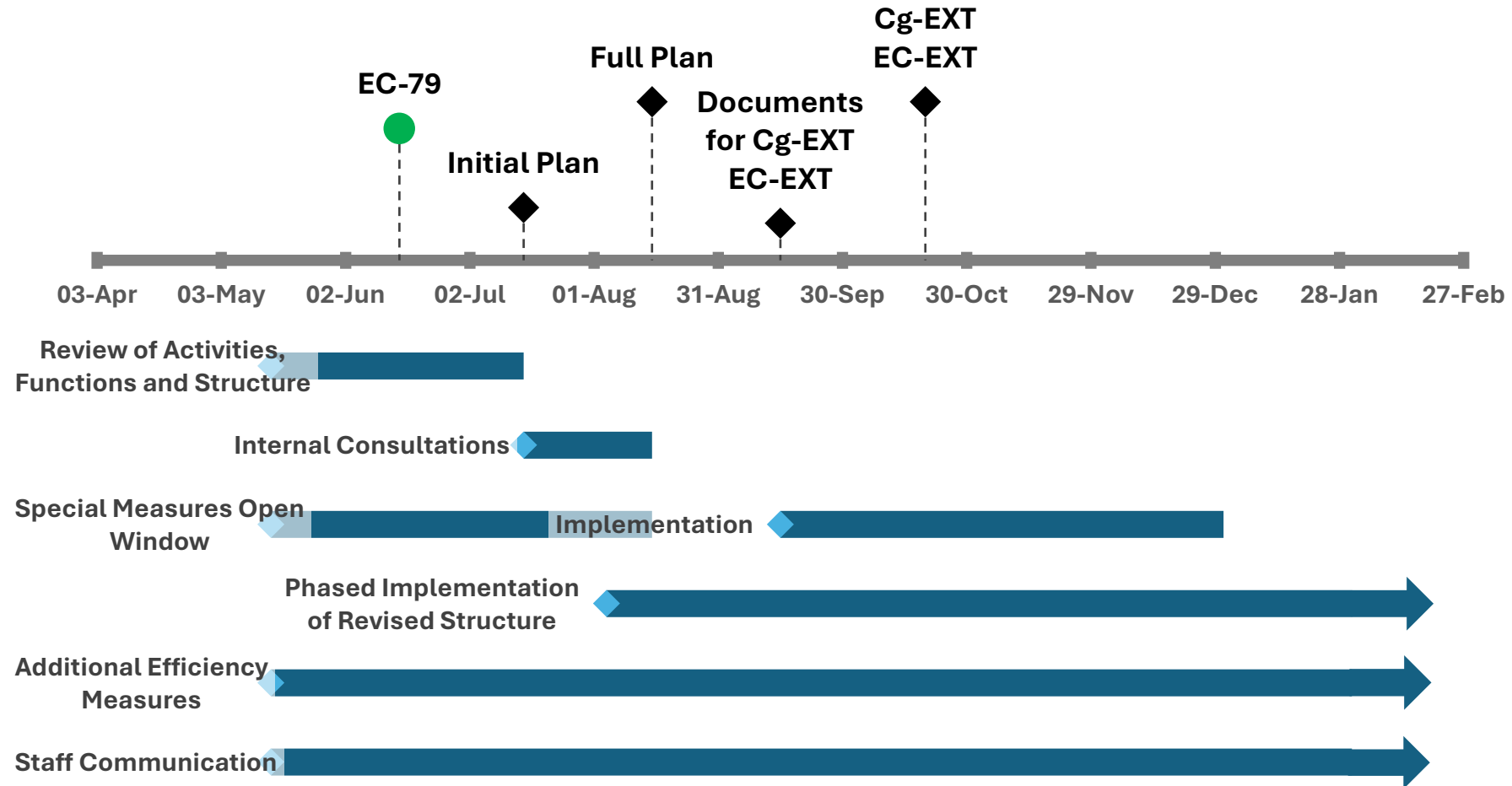
ORMG and Task Team



WORLD
METEOROLOGICAL
ORGANIZATION



Timelines



WORLD
METEOROLOGICAL
ORGANIZATION



Current Financial Situation



WORLD
METEOROLOGICAL
ORGANIZATION



Status of assessed contributions at 31 May

	2025	%	2024	%
1. Contributions outstanding at 1 January				
Arrears	29,111,337		29,069,252	
Assessment for current year	69,662,600		69,662,600	
Total outstanding at 1 January	98,773,937		98,731,852	
2. Contributions received at 31 May				
Applied to arrears	1,792,571	6	16,463,171	57
Applied to current year assessments	39,693,340	57	38,479,173	55
Total received 31 May	41,485,911	42	54,942,344	56
3. Contributions outstanding at 31 May				
Arrears	27,318,766	94	12,606,081	43
For current year	29,969,260	43	31,183,427	45
Total outstanding at 31 May	57,288,026	58	43,789,508	44
4. Member statistics as at 31 May				
Members who have made a payment	97		111	
Members fully paid	74		86	
Members owing for current year only	49		45	
Members owing for current and prior years	70		62	
Members having lost voting rights (list attached)	33		36	

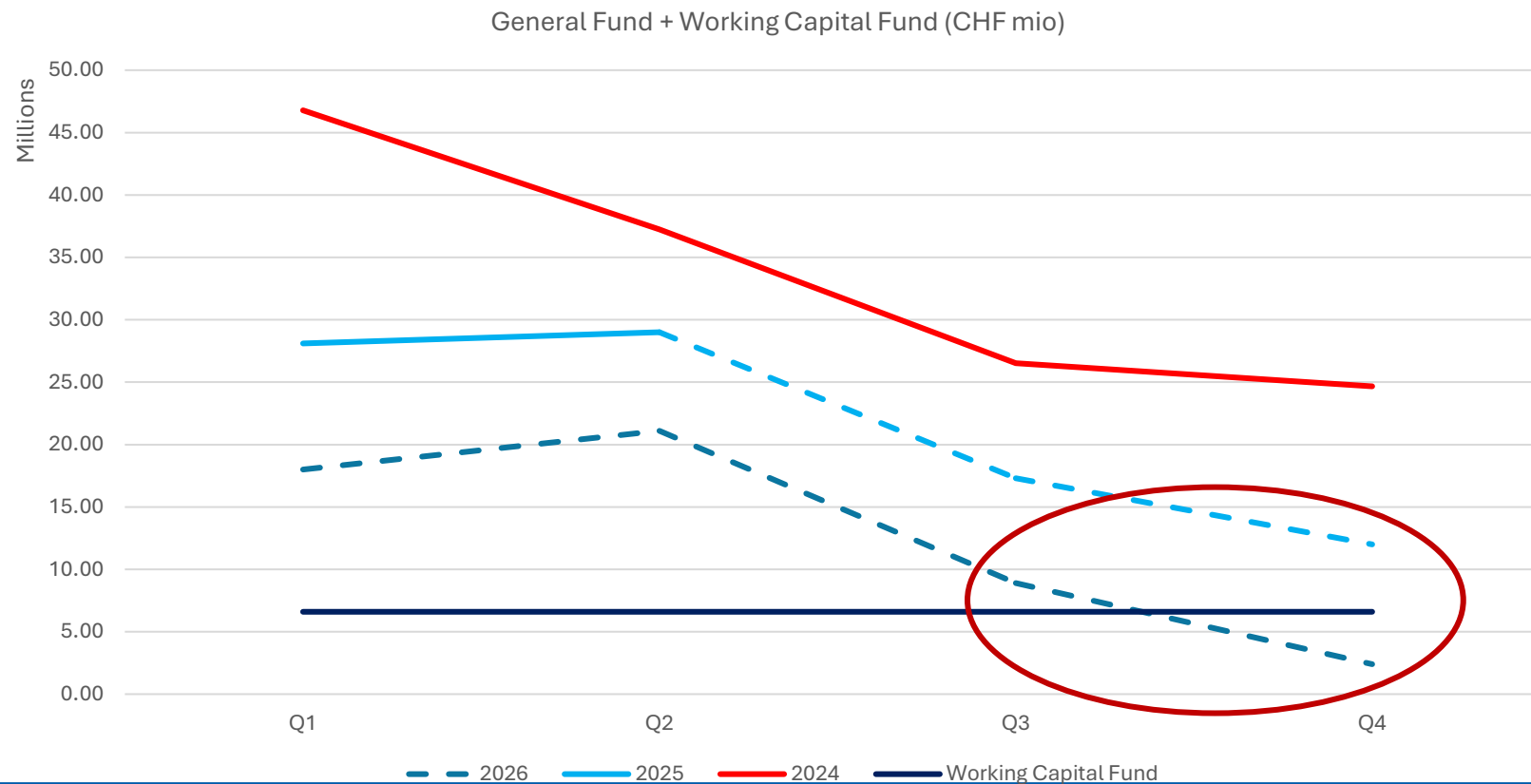


- 2025 started with same level of arrears as 2024
- Payments of 2025 assessment slightly higher (by 2%) than in 2024
- Significantly lower level of arrears payment in 2025, as compared to prior years (only 6% paid)
- At 31 May, outstanding amounts are 82% of the 2025 assessment
- Fewer Members have made payments in 2025, as compared to 2024



Regular Budget Cash

including forecast for 2025/2026



With measures in place, the highest liquidity risk arises in Q4 2025 and Q2 2026.

It is critical that the level of payments of assessed contributions is maintained, including advance payments for 2026.

Reflection in EC-79 Document

- Contained in EC-79/Doc. 8(3)

THE EXECUTIVE COUNCIL:

Notes with concern the substantial amounts of outstanding assessed contributions of certain Members as described in EC-79/INF. 8.3(2), including the deterioration of the level of payments of assessed contributions as compared to ~~prior~~previous years and its potential impact on the ability of the Secretariat to efficiently and effectively implement the approved ~~programme~~WMO Strategic Plan;

Urges Members to make the payment of outstanding assessed contributions a matter of highest priority and to make every effort to clear their dues as soon as possible.



Thank you!

Questions?

wmo.int